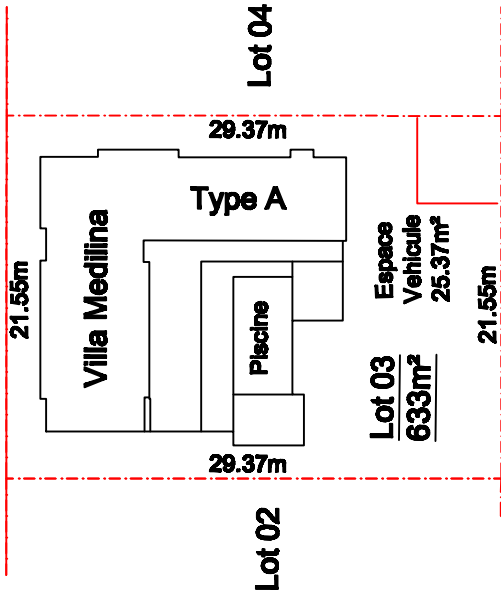


PLAN D'IMPLANTATION

CHEMIN DE SORTIE DE 6.00m DE LARGE

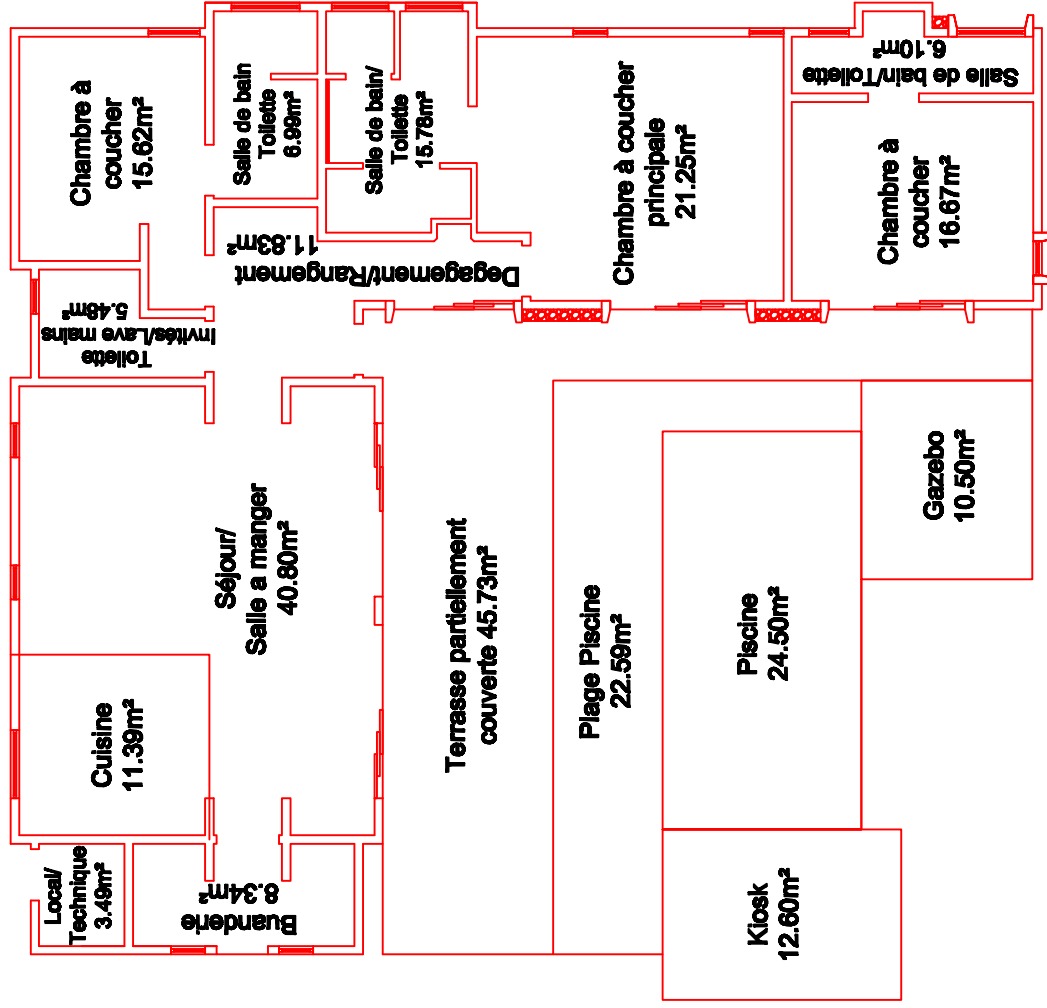


ALLEE COMMUNE DE 6.00m DE LARGE



Surface Privatif /Habitable: 163.74m²
 Surface utile : 141.29m²
 Total surface construite: 305.03m²
 Espace Jardin : 327.97m²

VILLA NATUREVA TYPE A PLAN DE VUE DU REZ DE CHAUSSEE LOT 3



SURFACE PRIVATIF/HABITABLE = 163.74m²
 'VILLA MEDILINA'
 FAISANT FACE AU ALLEE COMMUNE DE 6.00m DE LARGE